

Dairy Farm Cattle Management
Cihan University - Erbil
Department of Public Administration
Presented
By
Dr. Talal Subhi Mousa



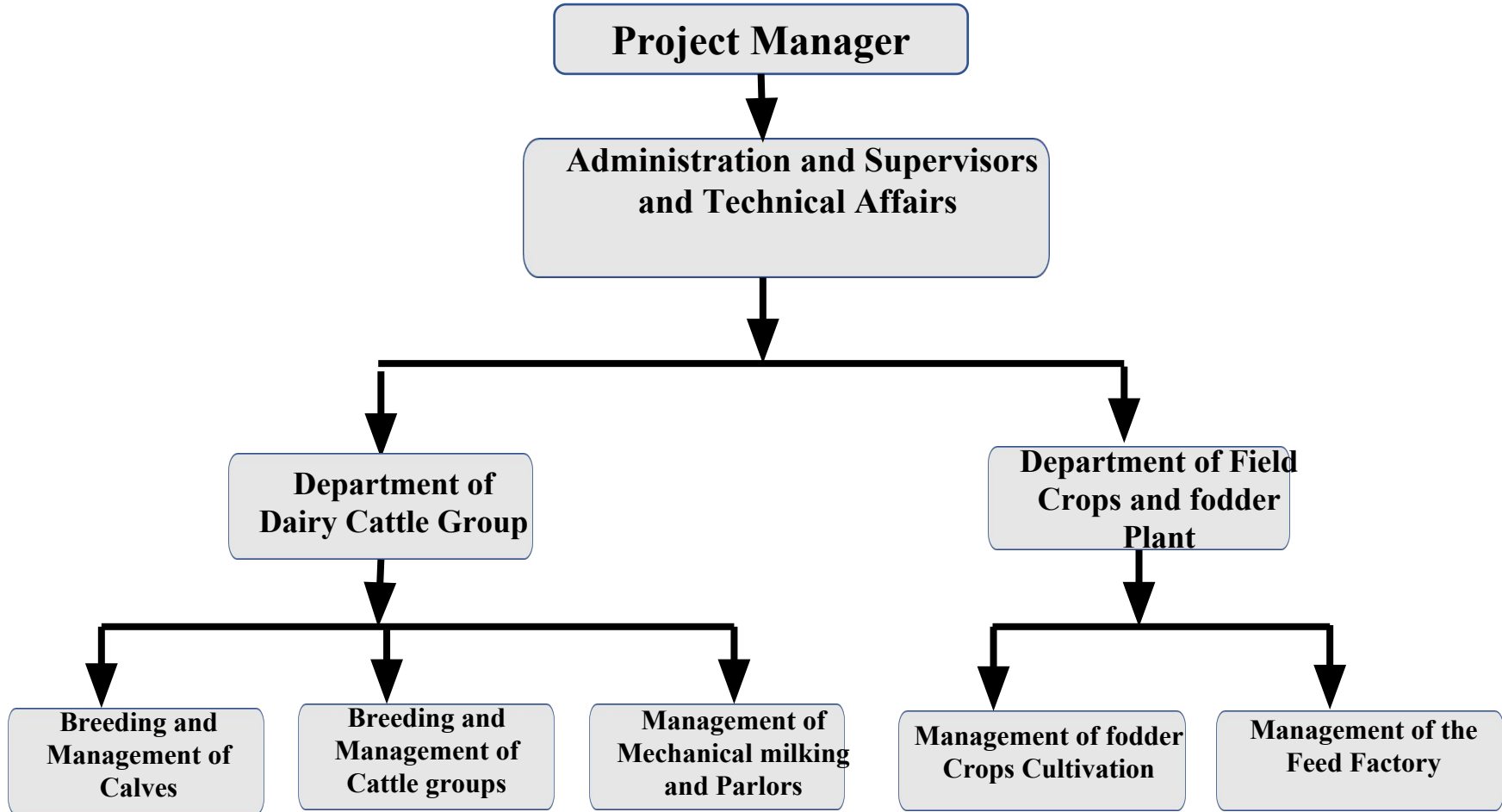
Dairy Farm Cattle Management

- The main objective of dairy management is to provide basic input for production, planning and management of dairy farms.
- The development in milk preservation, entrepreneurship development in dairy processing and management of dairy farm.

Organizational Structure of Cattle Breeding Station

The following chart shows Organizational Structure of Cattle Breeding Station

Organizational Structure of Cattle Breeding Station



A- Department of Dairy Cattle Group

Department of Dairy Cattle Group Breeding and management of calves

First- Calves can be divided into several types including the following:

1- Barn of newborn or Nursling calves and infant calves

- This step start from separate the calf from the mother cow with in different dairy cattle breeding systems.
- It is fed calves for several weeks, with milk only.
- Green fodder and concentrates are gradually introduced and the milk is reduced

Newborns Boxes



2-Barn of calves weaning

- Weaning means that a milk-based diet changes to a diet made up of fiber, without the calf being fed any milk in its diet.
- This change should be made gradually, and weaning should begin only after the digestive system of ruminants grows enough to enable them to maintain growth, health and normal living.

Second -Breeding and management of cattle groups

Cow barns can be divided into the following:

1-calving and sick cows barns

It should be isolated cows that are about to give birth to be taken away from sick cows



2- Dry cattle group

This group includes modern cows (non-milking) with pregnant wheels near birth, and these cows remain until birth and then transferred to the dairy cows.

3- Isolation cattle group

This group includes all infected cows that need treatment and should be kept in the isolation barn under the supervision of the veterinarian.

.

3-Dairy cattle barns

This group includes the cows at the beginning of their production and exceeded the stage of the highest production (Peak point), it would prefer to divide these groups also and by production to provide them with the necessary feed to maintain Especially cows whose production exceeds 15 kg / day and can be divided as follows:

- A group of cows whose production is less than 10 kg / day.
- The group of cows that produce 10-15 kg / day.
- The group of cows that produce from 15 kg / day and above.





Third - Insemination Bull Group :

- Each cow plant maintains a number of selected bulls for the purpose of natural Insemination.
- These bulls are similar to cows in the field, as they need continuous care, monitoring .
- nutrition to maintain their vitality and activity to achieve the desired purpose.



Mechanical parlors

- A milking parlor is part of a building where cows are milked on a dairy farm.
- Cows are brought to the milking parlor to be milked and are then returned to a feeding and/or resting area.
- Cows may also be milked in their housing area using bucket milkers or a pipeline milking system.
- Automatic or robotic milking systems usually operate without someone being present to supervise the milking process.
- The main advantages of a milking parlor when compared to milking cows in their housing area are that it increases labor efficiency,.

The Rectangle Parlor



The Ring Parlor



Thank You