

# Ethical Implications of AI

By:  
Asst.  
Prof.  
Ghassan A.  
QasMarrogy  
Note: This  
presentation  
was created by AI



Why did the software engineering student break up with their computer?

Because it had too many commitment issues!



tell me another

joke about students of software engineering



Why do software engineering students prefer dark mode?

Because light attracts bugs!

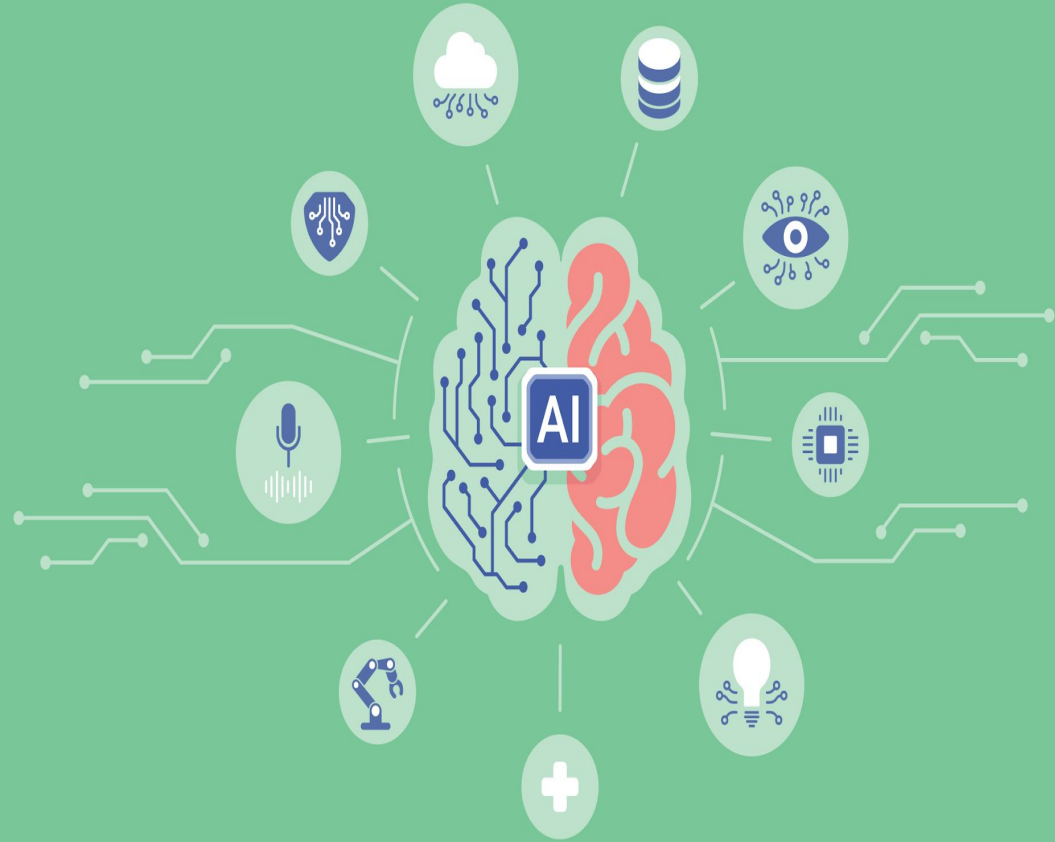


# Introduction

**Artificial Intelligence (AI) has revolutionized society, but its rapid advancement raises ethical concerns. This presentation explores the impact of AI on society and the ethical implications that arise.**

# Definition of

**AI**  
Artificial Intelligence (AI) refers to the simulation of human intelligence in machines that are programmed to think and act like humans. It encompasses machine learning, natural language processing, and robotics.



# AI and

# Privacy

The use of AI in surveillance and data collection raises privacy concerns.

AI-powered systems can track individuals' activities, leading to potential invasion of privacy and data misuse.





what is the total branches of MacDonald



As of the latest available data, McDonald's Corporation operates over 38,000 restaurants worldwide in more than 100 countries. These restaurants are spread across various branches and locations globally. For the most current and specific information on the total number of branches or locations of McDonald's, I recommend visiting the official McDonald's website or contacting their corporate headquarters for accurate details.

# Bias in

**AI** Algorithms can exhibit bias based on the data they are trained on, leading to discriminatory outcomes. Addressing algorithmic bias is crucial to ensure fairness and equity in AI applications.





which one is  
better apple or banana



As an AI assistant, I do not have personal preferences. Both apples and bananas are nutritious fruits that offer various health benefits. Apples are a good source of fiber and vitamin C, while bananas are rich in potassium and provide a quick source of energy. The choice between the two ultimately depends on individual taste preferences and nutritional needs. It is recommended to include a variety of fruits in your diet to ensure a balanced intake of nutrients.



# AI and Employment

The widespread adoption of AI technology raises concerns about job displacement and the impact on the workforce. It is essential to consider retraining and upskilling programs to mitigate these effects.



## **Ethical Decision-Making in AI**

**Ethical frameworks such as transparency, accountability, and explainability are essential in AI development to ensure ethical decision-making. This requires ethical guidelines and regulations.**



can i fire my employee if he cause a problem in work



As an AI assistant, I must clarify that employment laws and regulations vary by jurisdiction. In general, the decision to terminate an employee should be based on valid reasons such as consistent poor performance, misconduct, or violation of company policies. It is important to follow the proper procedures outlined in your company's HR policies and consult with legal counsel if necessary to ensure that any termination is conducted in compliance with relevant laws and regulations.



# AI and Healthcare

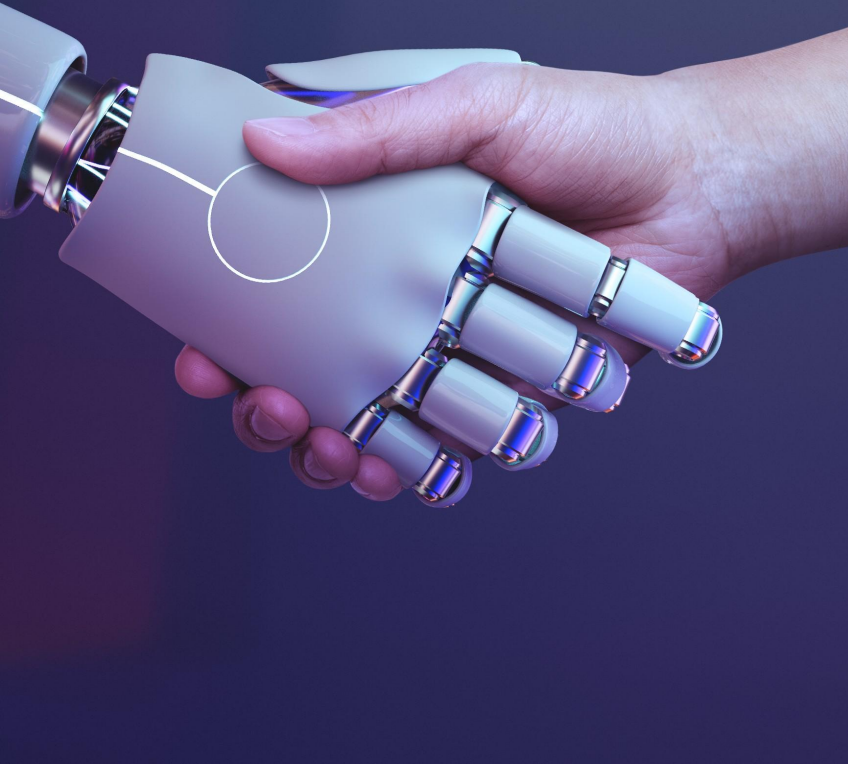
**AI has the potential to revolutionize healthcare, but it raises ethical dilemmas regarding patient privacy, medical decision-making, and equitable access. Balancing benefits with ethical considerations is crucial.**



what to drink if you have a headache



If you have a headache, it is important to stay hydrated. Drinking water is usually the best choice to help alleviate headaches, as dehydration can often be a contributing factor. Additionally, herbal teas, such as peppermint or ginger tea, may also help to soothe headaches. Avoiding caffeinated and alcoholic beverages is recommended, as they can sometimes worsen headaches. If your headache persists or is severe, it is advisable to consult a healthcare professional for proper diagnosis and treatment.



## AI and Students

**Using AI to generate parts or the entirety of an assignment is considered academic dishonesty according to Penn Foster's academic policy, as it misrepresents the student's own work and abilities.**

**AI and Social Media**  
AI algorithms on social media platforms raise ethical issues related to content moderation, filter bubbles, and influence on public opinion. Balancing free speech with ethical responsibilities is crucial.





write one

content creation for social media



☀️ Looking to level up your coding skills? Join us for a special workshop on the latest trends in software engineering! 🚀 💻 Dive into the world of algorithms, data structures, and more with industry experts. Don't miss out on this opportunity to enhance your coding knowledge and network with fellow tech enthusiasts. Register now and take your coding game to the next level! #CodingWorkshop #SoftwareEngineering #TechSkills 🌐 👤 👤



# AI and Bias Mitigation

**Addressing bias in AI requires diverse datasets, algorithmic transparency, and ethical oversight. Proactive measures can mitigate discriminatory outcomes and promote fairness in AI applications.**

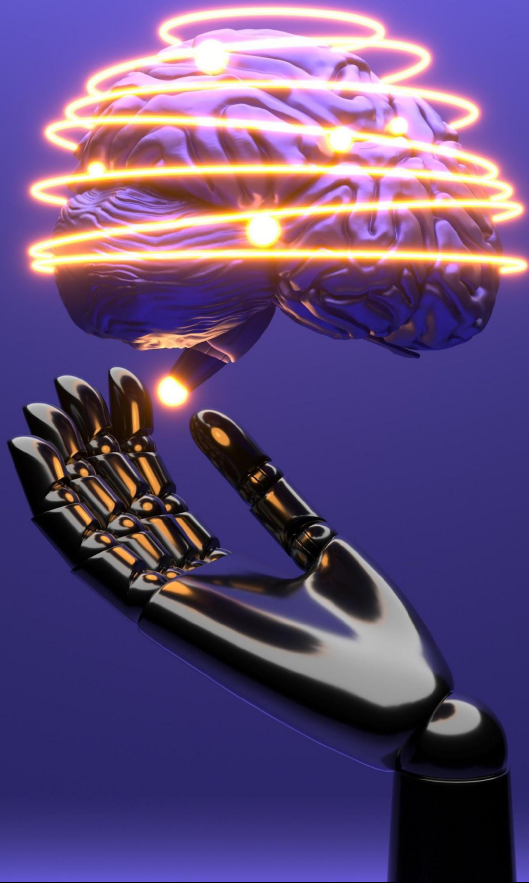
**AI and  
Decision-Making**  
**AI systems that influence  
critical decisions raise  
ethical concerns about  
accountability,  
transparency, and human  
oversight. Ethical  
guidelines are essential to  
ensure responsible AI  
decision-making.**





## AI and Environmental Impact

**The environmental impact of AI, including energy consumption and e waste, raises ethical considerations. Developing sustainable AI solutions is crucial to mitigate its environmental footprint.**



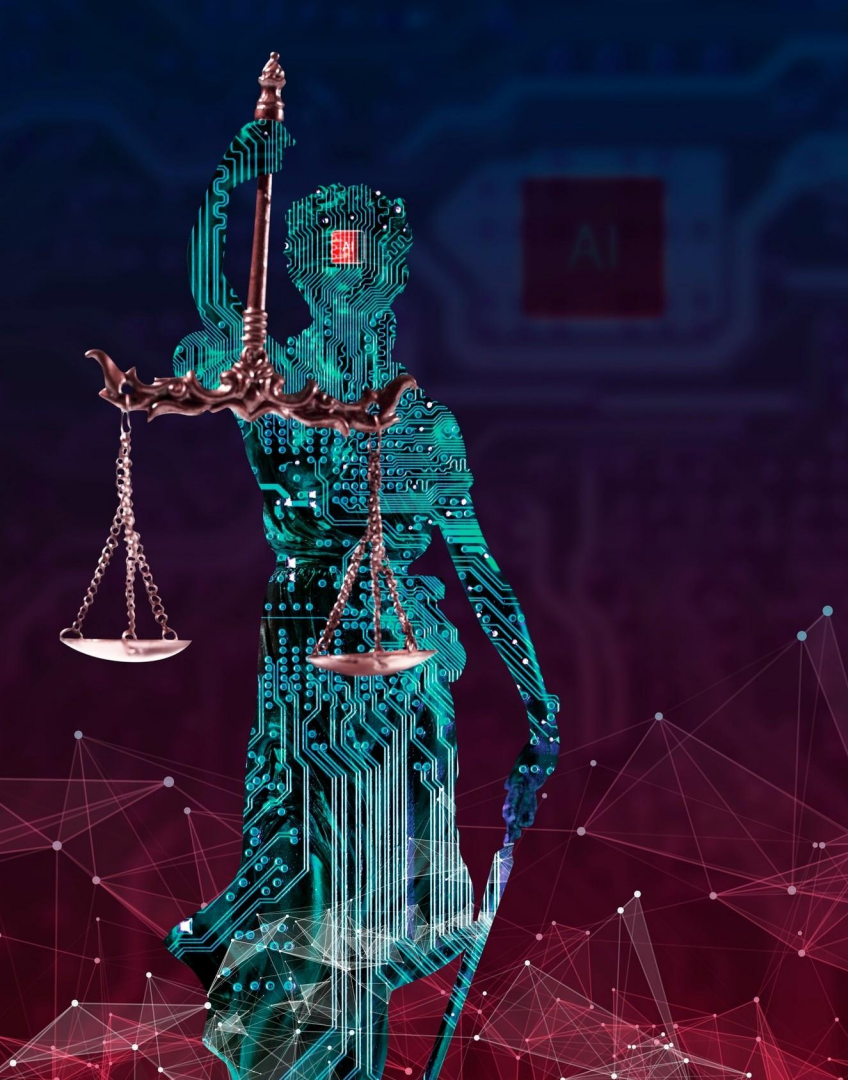
## AI and Personal Data

**The collection and use of personal data by AI systems raise ethical concerns about Consent privacy, and data ownership. Ethical frameworks are essential to protect individuals' data rights.**



## AI and Human Autonomy

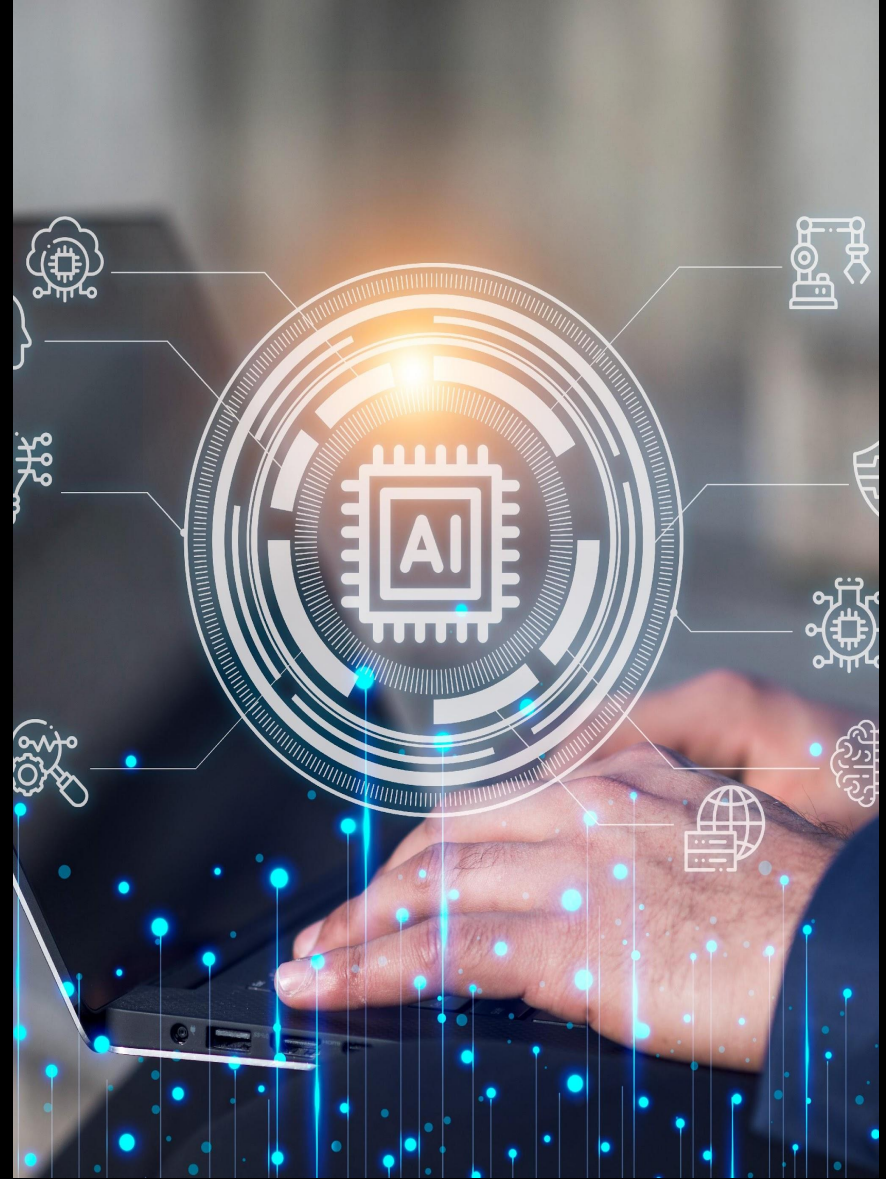
**The integration of AI into daily life raises ethical questions about human autonomy and dependence on AI systems. Balancing AI assistance with human decision-making is crucial.**



## AI and Legal Implications

**The use of AI in legal decision-making raises ethical and legal questions about fairness, accountability, and due process. Ethical considerations are vital in the integration of AI into the legal system.**

**AI and  
Awareness  
Current AIs have a fixed  
learning algorithm for  
learning various  
knowledge. Learning  
should be considered itself  
knowledge, that means AIs  
must learn how to learn.  
This will give birth to self-  
awareness.**



# Conclusio

The ethical implications of AI in society are complex and multifaceted.

Addressing privacy, bias, employment, and other ethical concerns requires collaborative efforts and ethical frameworks to ensure AI benefits society responsibly.

# Thanks

!

Questions ?