



Utilizing Artificial Intelligence in Medical Education

Prof. Dr. Amani A. Elfaki

Professor of Human Anatomy

College of Dentistry

Learning Objectives



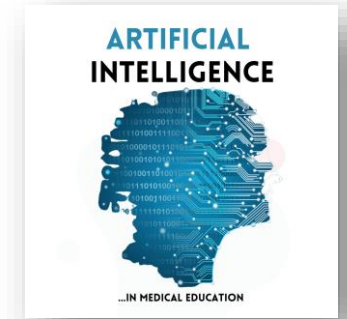
- Brief overview of the Importance of Medical Education.
- Introduce the Topic of Integrating AI into Medical Education.
- Enhancing Learning for Future Medical Professionals.

Importance of Medical Education



- Medical education equips healthcare professionals with the knowledge and skills necessary to provide high-quality care to patients.
- From diagnosing illnesses to prescribing treatments, well-educated medical professionals are essential for delivering effective healthcare services.

Why AI in Medical Education?



- Discuss the challenges faced in traditional medical education.
 - Traditional medical education tends to be siloed, with limited opportunities for interdisciplinary collaboration among healthcare professionals.
 - However, modern healthcare delivery often requires teamwork and communication across multiple disciplines. Lack of exposure to interdisciplinary teamwork during medical training can hinder effective collaboration in clinical practice.

AI Applications in Medical Education

- **Overview of various AI applications:**
 - Intelligent tutoring systems
 - Virtual patients
 - Adaptive learning platforms
 - Diagnostic and decision support tools



Intelligent Tutoring Systems



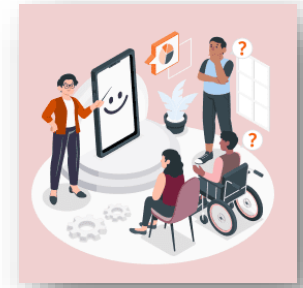
- Explanation of how intelligent tutoring systems can personalize learning experiences.
 - ITS can create individualized learning paths for each student based on their unique learning goals, preferences, and performance data.
 - For example, if a student expresses interest in a specific topic or struggles with a particular concept, the system can recommend additional resources, supplementary materials, or alternative learning activities to support their learning journey.
 - This flexibility allows students to explore topics at their own pace and in accordance with their interests.

Virtual Patients



- Introduction to virtual patient simulations.
 - Virtual patient simulations are innovative educational tools used in medical training to enhance clinical reasoning, decision-making skills, and patient care competencies.
 - These simulations recreate realistic clinical scenarios in a virtual environment, allowing learners to interact with virtual patients, make diagnostic and therapeutic decisions, and observe the consequences of their actions in a safe and controlled setting.

Adaptive Learning Platforms



- How adaptive platforms adjust content and pacing based on student performance and learning preferences.
 - Adaptive platforms use learning analytics to track and analyze student performance data over time. This data includes metrics such as completion rates, time spent on tasks, accuracy of responses, and patterns of engagement.
 - By analyzing this data, the platform can identify trends, assess learning progress, and make data-driven recommendations for instructional adjustments.

Diagnostic and Decision Support Tools



- Discuss AI-driven tools for medical diagnosis and treatment planning:
 - Medical Imaging Analysis.
 - Clinical Decision Support Systems (CDSS).
 - Genomic Analysis.
 - Predictive Analytics.
 - Drug Discovery and Development.
 - Virtual Health Assistants.
 - Robot-Assisted Surgery.
 - Remote Monitoring and Telemedicine.

Implementation Challenges



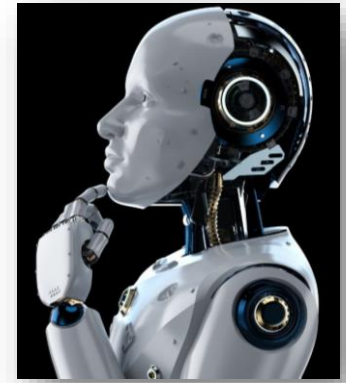
- Address common challenges in implementing AI in medical education:
 - Access to technology and resources
 - Curriculum integration
 - Data privacy and security

Best Practices for Integration



- Strategies for successful integration of AI in medical education:
 - Faculty training and support
 - Collaboration with technology partners
 - Continuous evaluation and improvement

Future Directions



- Discuss emerging trends and future directions in AI-driven medical education.
- Potential advancements and opportunities for further innovation.

Conclusion



- Recap key points about the benefits and challenges of using AI in medical education.
- Emphasize the potential of AI to transform medical learning and improve patient care.

**THANKS FOR
YOUR ATTENTION**

**ANY QUESTION
SEARCH IN GOOGLE**

memegenerator.es



Thank You!