



Good Assessment

Prof. Dr. Amani Abdelrazag Elfaki
Professor of Anatomy

Intended Outcomes



By the end of this session, attendees will be able to:

- Identify the advances and disadvantage for different types of questions
- Define Blueprint in assessment and explain its importance
- Construct a course/test blueprint

Different Types of Exam Questions

- Multiple-choice Questions
- TRUE-FALSE QUESTIONS
- SHORT-ANSWER QUESTIONS
- ESSAY QUESTIONS

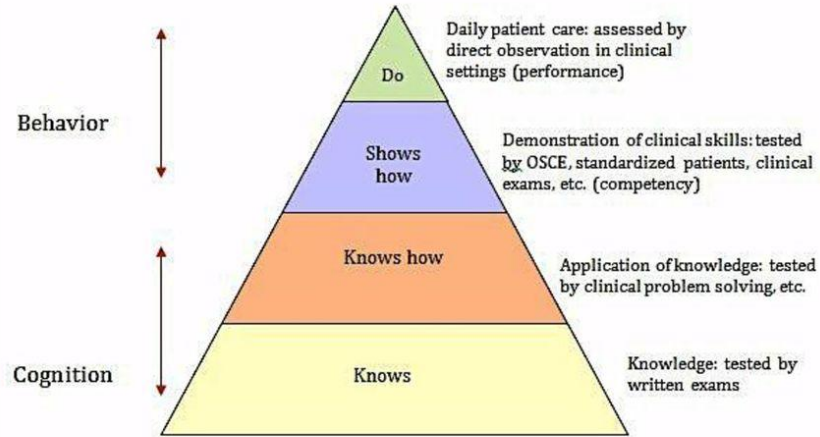
Advantages and Disadvantages of Different Types of Exam Questions



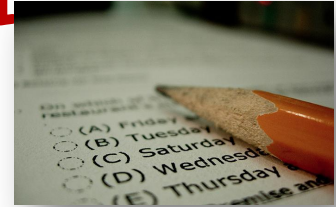
It's good to regularly review the advantages and disadvantages of the most commonly used test questions and the test banks that now frequently provide them.

Assessment Methods in Undergraduate Medical Education

MILLER'S PYRAMID OF ASSESSMENTS



What is the most widely used form of assessment question?



- Multiple Choice (M/C) is a very common assessment question type. It offers a statement and then students must select the correct answer (best answer) from a list of possibilities. This question type can assess information recall, reading comprehension, critical thinking/problem solving, and other student learning factors.



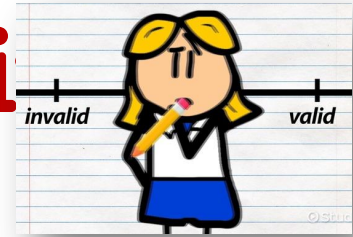
What should be the Percentage of
MCQs
in each Theoretical Exam
for Medical Students?

Characteristics of Good Assessment



- Validity
- Reliability
- Educational impact
- Cost-effectiveness
- Utility

How to Increase Test validity



- Blueprinting.
- Constructing high quality test items.
- Revising the test by an expert.

Blueprint in Medical Education



It is a template that represents a **systematically** developed plan to ensure:

- Proper **weightage** and **representativeness** of contents and learning outcomes in the exam
- Enhance constructive alignment
- Provide evidence of **validity**.

Advantages of Blueprinting



Blueprint Matrix Ensures

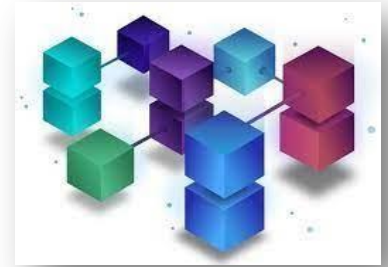
- Sampling across curriculum.
- Balance across assessment formats.
- Balance of strengths and weaknesses of various assessment methods.

Preparation of a Blueprint



- Decide the weightage to be given to content areas, domains of learning and methods of assessment.
- Decide the total weightage and number of items to be included in the assessment.
- Decide on the table of test specifications.
- Prepare individual questions.

Components of the Blueprint



- Basic information: title of the course, level of candidates.
- Table, worksheet or spreadsheet.
- Plan for evaluation of the assessment.

References

- Downing, S. M., & Haladyna, T. M. (2004). Validity threats: overcoming interference with proposed interpretations of assessment data. *Medical education*, 38(3), 327-333.
- Gale, R., & Grant, J. (2009). AMEE Medical Education Guide No. 10: Managing change in a medical context: Guidelines for action. *medical teacher*, 19(4), 239-249. doi:10.3109/01421599709034200
- Hosam Eldeen Elsadig Gasmalla Mohammed and Alaa AbuElgasim Mohamed Ibrahim (2016). Constructing A-Type Multiple Choice Questions for Basic Medical Sciences. First edition. Education Development Center, Nahda College.
- Mennin, S. P., & Kaufman, A. (1989). The change process and medical education. *Med Teach*, 11(1), 9-16. doi:10.3109/01421598909146271
- Patil, S. Y., Hashilkar, N. K., & Hungund, B. R. (2014). Blueprinting in assessment: How much is imprinted in our practice?.
- Patrick D. Bridge, Joseph Musial, Robert Frank, Thomas Roe and Shlomo Sawilowsky (2003) Measurement practices: methods for developing content-valid student examinations, *Medical Teacher*, 25:4, 414-421.
- Somnath Mookherjee, Anna Chang, Christy K. Boscardin and Karen E. Hauer (2013) How to develop a competency-based examination blueprint for longitudinal standardized patient clinical skills assessments, *Medical Teacher*, 35:11, 883-890.